



2022

ESG

ESG

GRI

1.

2.

3.

4.

1.

2.

3.

4.

1.

2.

3.

4.



2022

"

"

"

"

"

"

"

"

"

GLCM

2021-2030 "

"

"

30

20

30

"

"

2023

"

"

"

"

"

"

2021-2030 " 2022 " GLCM
2030

1

1

2

XLPE

PP

2022

2

1

2022

768t/

566t/

1321t/

2

2022

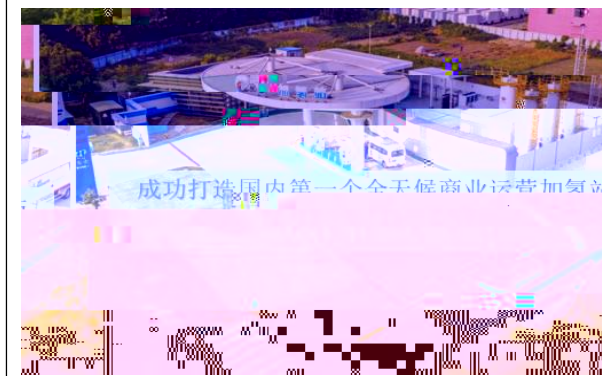
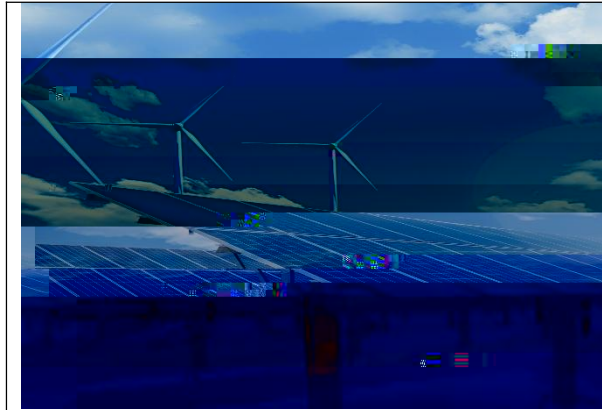
3.5

3

1

1

2022



" " " + "

" 1+1+1+N"

" — — "

90%

2022

" " 4

1 7

2

MUSE-M

2

2022

1. 5GWh

80MW/200MWh

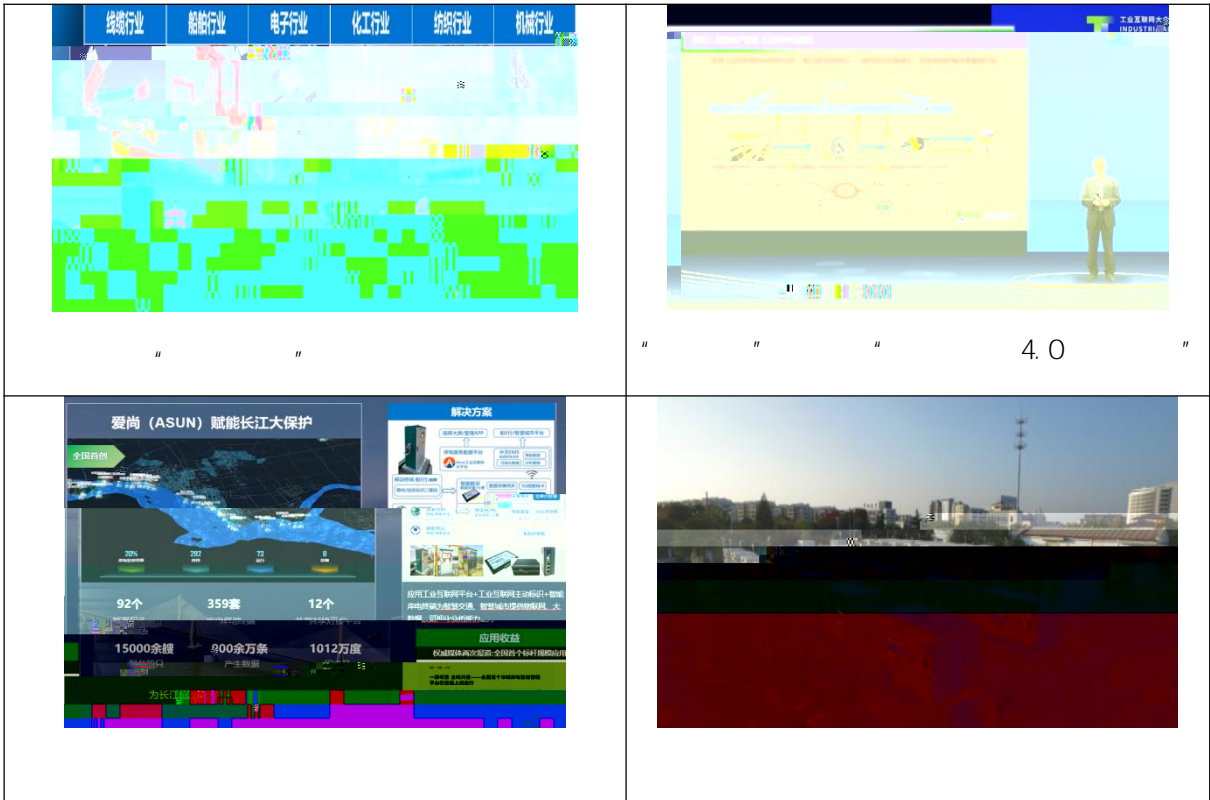
20MW/20MWh

3

3060' "

5000

2022



4.0

2022

6400

UV

2022

"

"

“ ”

2022

5000

7

3

2

1

1

1800

2022



2022





“ ”

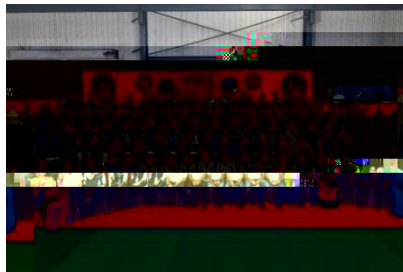


“ ”



2022 10

Sri ci ty

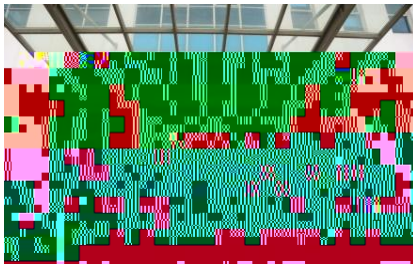


2022 12

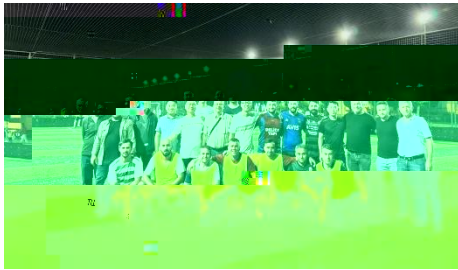
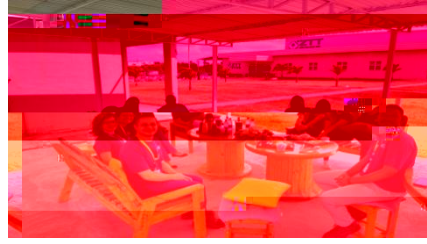
Bozuyuk



2022



" Pooj a "



" TATC+ "

2

" "

" H'

"

"

" "

AB

2

"

"

"

"

"

"

"

"

1
2022

10%

30

B

A 408

B 523

2

"

"

2022

CSR

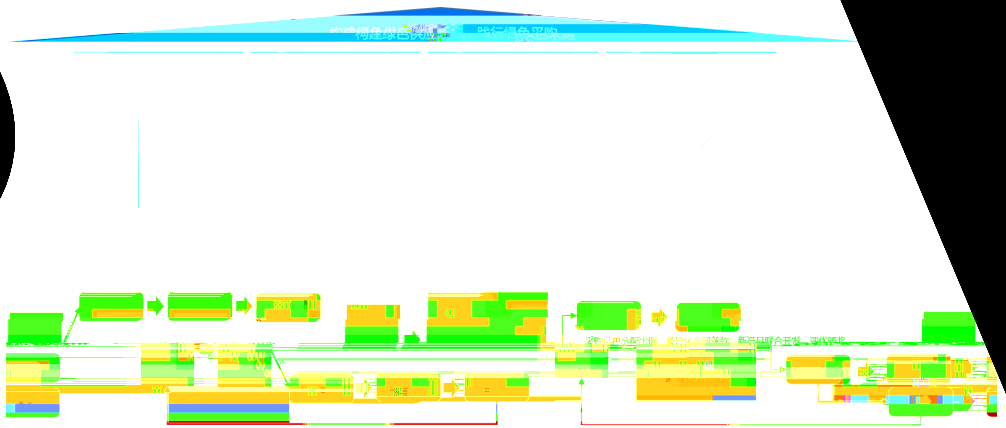
"

"

1

CSR

5



2022

CSR

2

2022

"

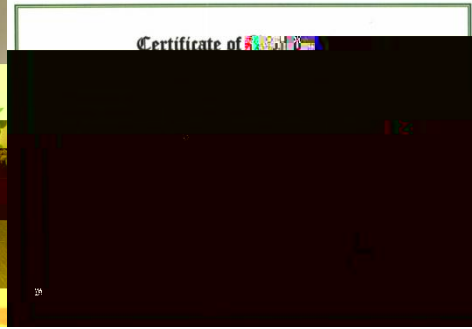
"

2

1

“

”



3

”

”

”

”

"

"

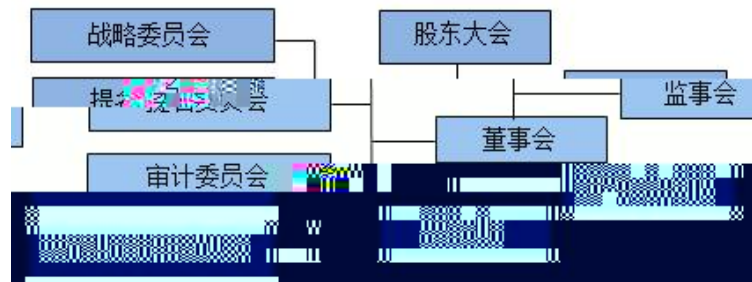
2022

2022 2

1

9

3



2022

2

12

11

2

3

" 7-Green "

1

"

"

2

2022

2

3

"

1

"

"

"

"

2

"

"

S

"

ztcs@chi.naztt.com

2022

1

2022

1

5

DNS

6

2

1

2

3

4

2022

474

PCT

14

1 " "

2011 4 "

"

12

9

"

" 8

2022

"

"

"

"

"

"

"

"

2

2022

GRI

GRI

"

"

103-2		P40-43
103-3		P40-43
203-1		P40-43
203-2		P40-43
GRI 204	2016	
GRI 103	2016	
103-1		P10
103-2		P35-36
103-3		P35-36
204-1		P35-36
GRI 205	2016	
GRI 103	2016	
103-1		P10
103-2		P45
103-3		P45
205-1		

103-2		P19-21
103-3		P19-21
302-1		P19-21
302-2		P19-21
302-3		P19-21
302-4		P19-21
302-5		P19-21
GRI 305 2016		
GRI 103 2016		
103-1		P10
103-2		P16-18
103-3		P16-18
305-1	1	P16-18
305-2	2	P16-18
305-3	3	P16-18
305-4		P16-18
305-5		P16-18
305-6	ODS	P16-18
305-7	NOX SOX	P16-18
GRI 306 2016		
GRI 103 2016		
103-1		P10
103-2		P24
103-3		P24
306-1		P24
306-2		P24
306-3		P24
306-4		P24
GRI 307 2016		
GRI 103 2016		
103-1		P10
103-2		P44-45

103-3		P27
GRI 412	2016	
103	2016	
103-1		P10
103-2		P30
103-3		P30
412-1		P30
412-2		P30
GRI 413	2016	
GRI 103	2016	
103-3		P00
103-2		P37-38
103-3	-3	P37-38

103		
1033		
1033	-3	19 19



GRI 103 2016		
103-1		P10
103-2		P46
103-3		P46
GRI 419 2016		
GRI 103 2016		
103-1		P10
103-2		P43- 44
103-3		P43- 44



1

5

13

" "



1

000

S



2

5G

1 2022

8

1 + X = 0

		1 2

